

CorNotes

CVI SEMINAR SERIES

There are no scheduled CVI Seminars during the months of July and August. If you are interested in sponsoring a seminar speaker for the next academic year, please contact Dr. Leanne Cribbs at x72817.

CVI JOURNAL CLUB

July 12.....Dr. Samarel
July 26.....Dr. Martin

For further information, contact Dr. Ken Byron at x72819.

RE-LY CLINICAL TRIAL

Dr. Peter Santucci of the Section of Electrophysiology is the Principal Investigator conducting the RE-LY Clinical Trial on behalf of Boehringer Ingelheim.

RE-LY is an exciting new study of an investigational oral anticoagulant. It is comparing warfarin to dabigatran etexilate, a direct thrombin inhibitor.

The primary objective of the trial is to demonstrate the efficacy and safety of dabigatran etexilate in patients with non-valvular atrial fibrillation for the prevention of stroke and systemic embolism.

Patients will receive either open label warfarin or dabigatran etexilate. For those patients receiving warfarin, their INRs will be obtained through the Coumadin Clinic and the warfarin dose adjusted per protocol (INR value is within the range of 2.0-3.0). Patients receiving dabigatran etexilate do not require INR monitoring. If the patient is randomized to dabigatran etexilate the dose will be one of two blinded doses.

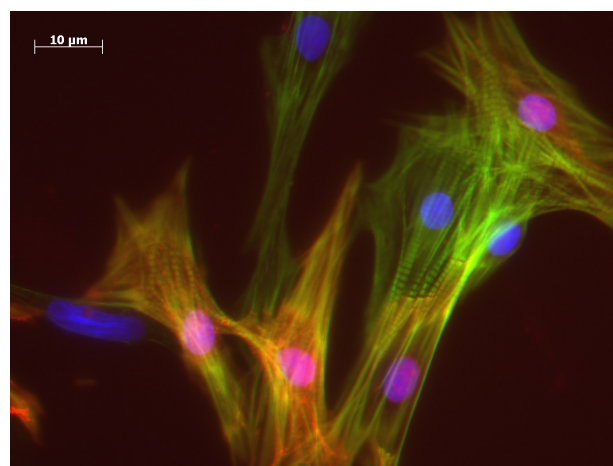
Inclusion criteria: documented atrial fibrillation. In addition to AF, patients must have one of the following additional risk factors for stroke: history of previous stroke TIA or systemic embolism; LVEF<40%; symptomatic

heart failure (documented to be NYHA Class 2 or greater); age > 75 years or >65 years with one of the following additional risk factors: DM on treatment, documented CAD, or hypertension requiring medical treatment.

Patients already on coumadin are eligible, but in particular, patients newly beginning anticoagulation are needed.

Standard safety labs will be obtained on all patients participating in the study. The duration of the trial will range from a minimum of 12 months to a maximum of 3 years.

For more information or to alert the Electrophysiology team of potential participants, please contact the project's coordinator, Cindy Finn, at 708-216-2646.



**LOYOLA
MEDICINE**

Loyola University Chicago
Stritch School of Medicine