

# CorNotes

## CVI SEMINAR SERIES

The next CVI Seminar will be held on **Thursday, December 14<sup>th</sup> at 4:00 pm** in **The Van Kampen Conference Center, Building 110, Room 6294**. This seminar features presentations by our recent Falk Fellows, **Drs. Xiang Ji and Kyle Henderson**, who will describe work conducted during the tenure of their awards.

For further information about the CVI Seminar Series, contact Dr. Leanne Cribbs at x72817.

## CVI JOURNAL CLUB

December 14.....Dr. Akar

For further information, contact Dr. Ken Byron at x72819.

## CARDIOLOGY – CVI RESEARCH DIVISION BASIC SCIENCE SEMINAR

The Cardiology Division and the CVI Research Division are sponsoring a series of joint seminars by Loyola Faculty. The following seminar is scheduled at **7:30 am** in the **Van Kampen Conference Center**:

December 21.....Dr. Leanne Cribbs

The title of Dr. Cribb's talk is:

**“Update on Cord Blood Stem Cells and Cardiac Therapy”**

For further information, contact Dr. Samarel at x72821

## WHITE MEMORIAL FUND

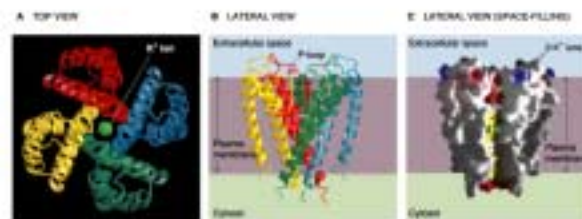
This is just another reminder that an endowment fund has been established to defray the cost of student travel and presentation at scientific meetings, and to support the cost of publishing scientific manuscripts by medical and graduate students. The endowment has been funded by Richard E. White and Angeline (Faye) Schrater in memory of Mr. White's parents. Faculty members who require travel support for their students to attend scientific meetings, or to defray publication costs of student papers, should direct written requests for funding to Dr. Samarel, Director of Research, CVI.

## RECENT PUBLICATIONS FROM THE CVI

Ramana RK, Joyal D, Arab D, Dieter R, Steen L, Lewis B, and Leya F. Clinical experience with rotational atherectomy in patients with severe left ventricular dysfunction. The Journal of Invasive Cardiology 2006. 18(11):514-18.

Ramana RK, Helm R, Moran JF and McKiernan T. A transfusion related myocardial injury. Congestive Heart Failure Journal 2006. 12(4):227-230.

Ramana RK, Sanagala T, Lichtenberg RC. A new angle on the angle of Louis: A study to assess the accuracy and consistency of estimation of central venous pressure in obese patients. Congestive Heart Failure Journal 2006. 12(4): 196-9.



Copyright © 2006 CorNotes/CorNotes, All rights reserved.